



The Road to Ascot Lane

Ed: 2023.4

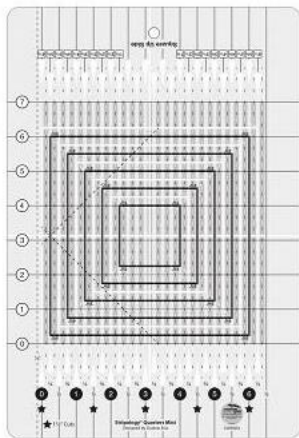
Keeping you up to date with what's new at Ascot Lane



Stripology, Stripology, Stripology



Gudrun Erla has released a new Stripology ruler and a new book covering all of her Stripology rulers.



Stripology Quarters Mini Ruler

The Stripology Quarters Mini Ruler is designed to work with units up to 6¼ inches, you'll be able to cut ¼ inch and ⅛ inch increments as well.

Turn the ruler around and use the black and white squares to square up blocks up to 6¼ inches.

Use the 45 degree lines to trim flying geese units down to ¼ inch increments. There are even 1½ inch cuts that are highlighted with black stars.

Great for fussy cutting and trimming embroidered blocks. The flexibility of the ruler adjusts for the thickness of the embroidery giving you an accurate trim.

Ruler size: 8½ x 12½ inches

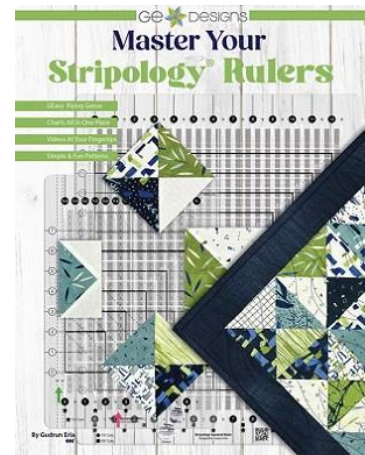
Order Code: CG RGE4

Master Your Stripology Rulers

This is the book for every Stripology ruler user. Take your Stripology rulers beyond just cutting strips, squares and rectangles.

Master Your Stripology Rulers contains all the resources, techniques and charts to cut strips, diamonds, triangles and more in ¼ inch and ⅛ inch increments. Also included are great time saving techniques to make half square triangles, quarter square triangles and flying geese. There are also some simple patterns to test out the techniques described.

Stripologise any project you are working on with charts and illustrations along with videos at your fingertips. Scanning the QR codes featured throughout the book to take you to videos demonstrating that particular technique.



Order Code: AL GE-517

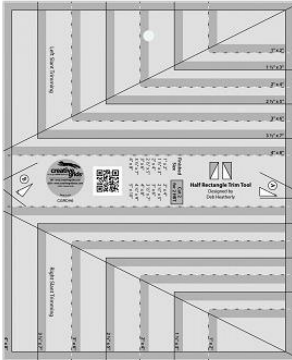


The Road to Ascot Lane

Ed: 2023.4

Keeping you up to date with what's new at Ascot Lane

★ Creative Grids Half Rectangle Trim Tool ★



The Half Rectangle Trim Tool makes half rectangle units in 7 different sizes. Make the half rectangle units with either a right or left slanting seam.

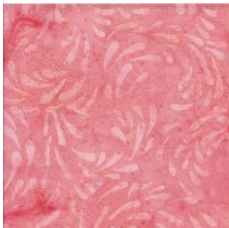
The cutting chart is printed right on the tool, along with trim lines for perfect half rectangle units every time. The A and B trims make it easy to line up the triangles for sewing.

Since half rectangles have a different angle than half square triangles, an extra $\frac{1}{8}$ inch indent is added in the final trimming so that when sewn into a project, the seam lines will go corner to corner.

Order Code: CG RDH6

★ New Island Batik fabrics arrive at Ascot Lane ★

Recently arrived at Ascot Lane is this selection of fabrics from Island Batik. Available in half bolts (approx 5.5m each), order a wide range of colours and prints. In stock now.



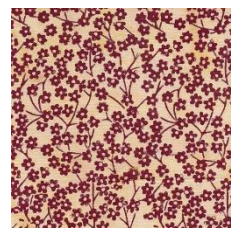
[IB 111721310](#)



[IB 111816845](#)



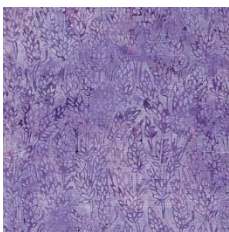
[IB 111818860](#)



[IB 112311051](#)



[IB 112311054](#)



[IB 112318405](#)



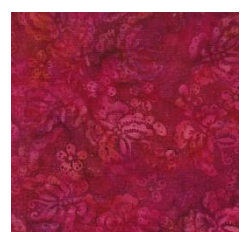
[IB 112320115](#)



[IB 112323695](#)



[IB 112323860](#)



[IB 112328375](#)



[IB 112331190](#)



[IB 112331615](#)



[IB 112333275](#)



[IB 112333828](#)



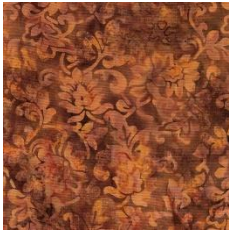
[IB 112334247](#)



The Road to Ascot Lane

Ed: 2023.4

Keeping you up to date with what's new at Ascot Lane



[IB 112337265](#)



[IB 112337480](#)



[IB 112337580](#)



[IB 112337810](#)



[IB 112340265](#)



[IB 112346852](#)



[IB 112348285](#)



[IB 112348435](#)



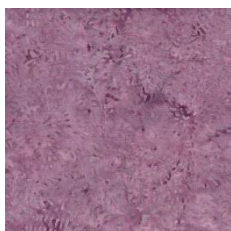
[IB 112348910](#)



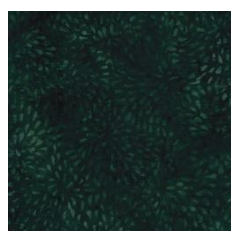
[IB 112349866](#)



[IB 121510130](#)



[IB 121610415](#)



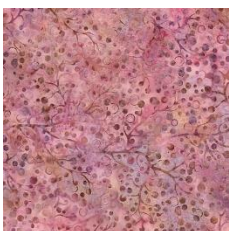
[IB 121611685](#)



[IB 121613845](#)



[IB 121628060](#)



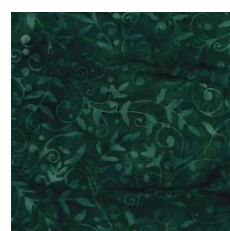
[IB 121813415](#)



[IB 121818685](#)



[IB 121913511](#)



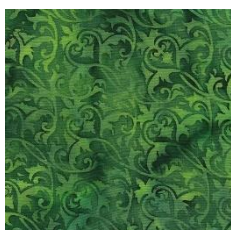
[IB 121913681](#)



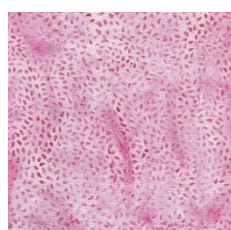
[IB 122244685](#)



[IB 122245700](#)



[IB 122246685](#)



[IB 122260105](#)



[IB 512305840](#)



[IB 711707085](#)

Click on the image or order code for larger images of each print.

Prices are available on our website once you are logged in.